

PiedmontProperty.com - Telephone: 0039 0173 529277 or 0039 3337464121 - client.info@piedmontproperty.com

Country Home in the Langhe- Near Barbaresco and Alba

Reference: 6763 - Price: €620,000.

Property categories : [Farmhouse and country house](#) : [Luxury property](#) : [Ready to move into](#) : [Vineyard](#)



Area: Cuneo Langhe **Parking:** Yes

Land size: 4000 sqm **Services:** All services connected and central heating system

Bedrooms: 3 **Condition:** Perfectly restored

Location

This restored country home is situated in a private and tranquil location close to the towns of Alba and Barbaresco. Located in a south facing elevated position it enjoys the most spectacular vineyard views. The property is approached by a good asphalt road and has its own private gated entrance. The property enjoys a countryside location but is not isolated with towns close by, perfect to integrate and enjoy the 'Dolce Vita' of the true Italian lifestyle. Milan, Turin, the Italian Lakes, Alpine ski resorts and the Ligurian coast are all close by.

Property Description

Beautiful Langhe stone country property which has been carefully restored over the years and currently provides a charming character/contemporary style family home.

The original character of the house has been preserved with original features maintained including many red brick vaulted ceilings.

Ground floor - Quality fitted kitchen with immediate access to a wonderful large covered terrace perfect for alfresco dining, dinner parties and entertaining.

Spacious living room with feature fireplace perfect for spring and early autumn when full heating is not necessary.

Double bedroom 1

Bathroom 1 and utility room

Stairs lead to the first floor:

First floor

Further living room with wonderful panoramic arched windows and immediate access to a further spacious terrace area enjoying the most beautiful views

Bedroom 2 - spacious double room with balcony

Bathroom 2 - with shower

Bedroom 3 - with ensuite bathroom 3

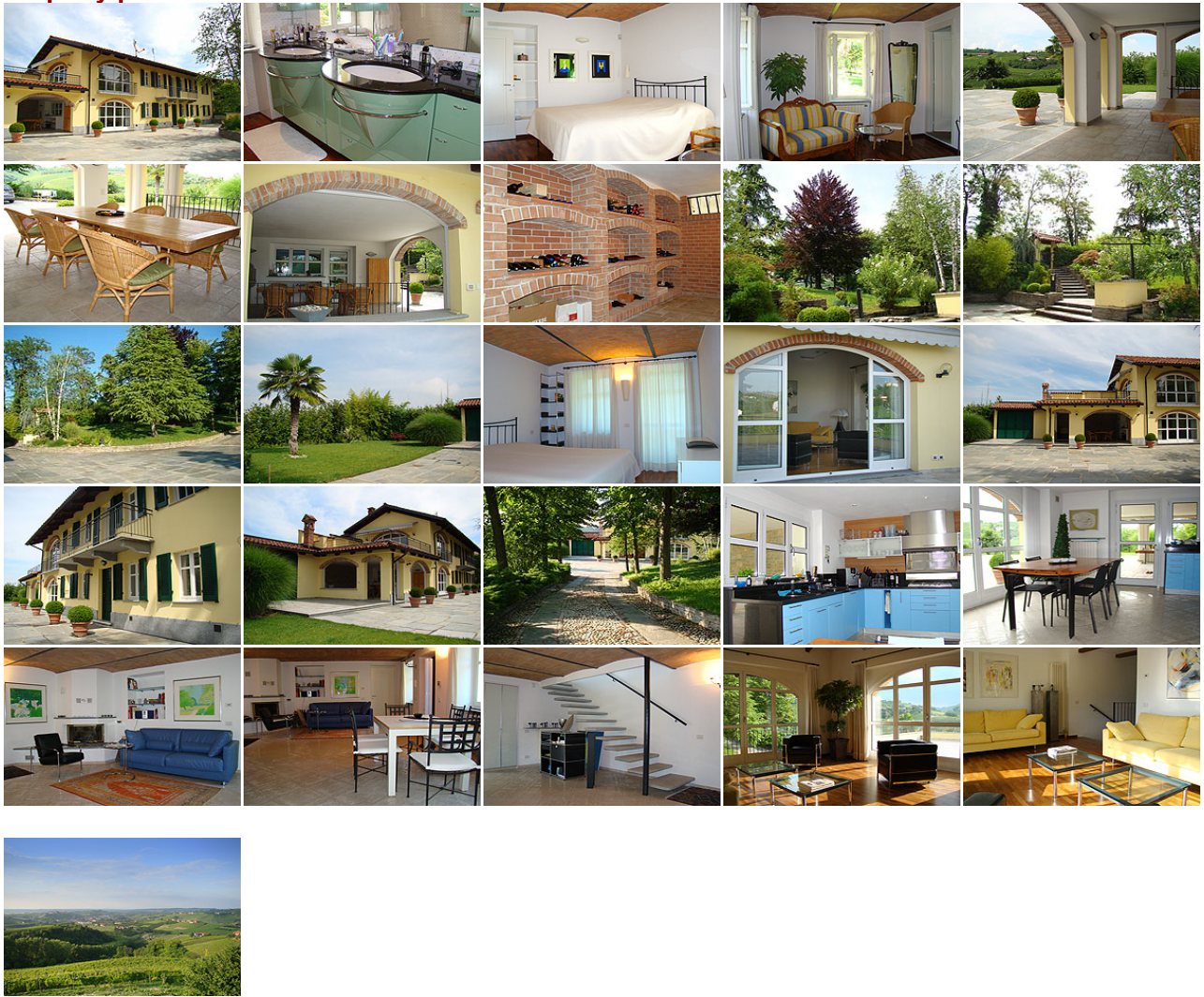
Cantina-The perfect room for storing and tasting the prestigious wines of the local area

Courtyard area and Gardens

The property is in an elevated position with views of the surrounding vineyards. The courtyard and garden areas are immaculate. Lovingly landscaped, with outside lighting and many mature plants and trees including fruit trees.

The property also has a small 2000sqm vineyard.

Property photos



PiedmontProperty.com - client.info@piedmontproperty.com - Tel: 0039 0173 529277 / 0039 3337464121